



PREMIUM AFTERMARKET WIND DEFLECTORS

Chrysler PT Cruiser wind deflector fitting instructions

Product No: 08.03.02.01



Product No: 08.03.02.03



What is in the box

- 1 x Wind deflector
- 2 x Wind deflector plugs (left& right)
- 1 x Installation manual

Tools required

- 1 x Marker
- 1x 13mm drill bit



PREMIUM AFTERMARKET WIND DEFLECTORS

STEP 1

Open the top and fold the seats forward then slide the wind deflector rear pins in the opening of the rear seats.



STEP 2

Lift the seatbelt cover upwards.



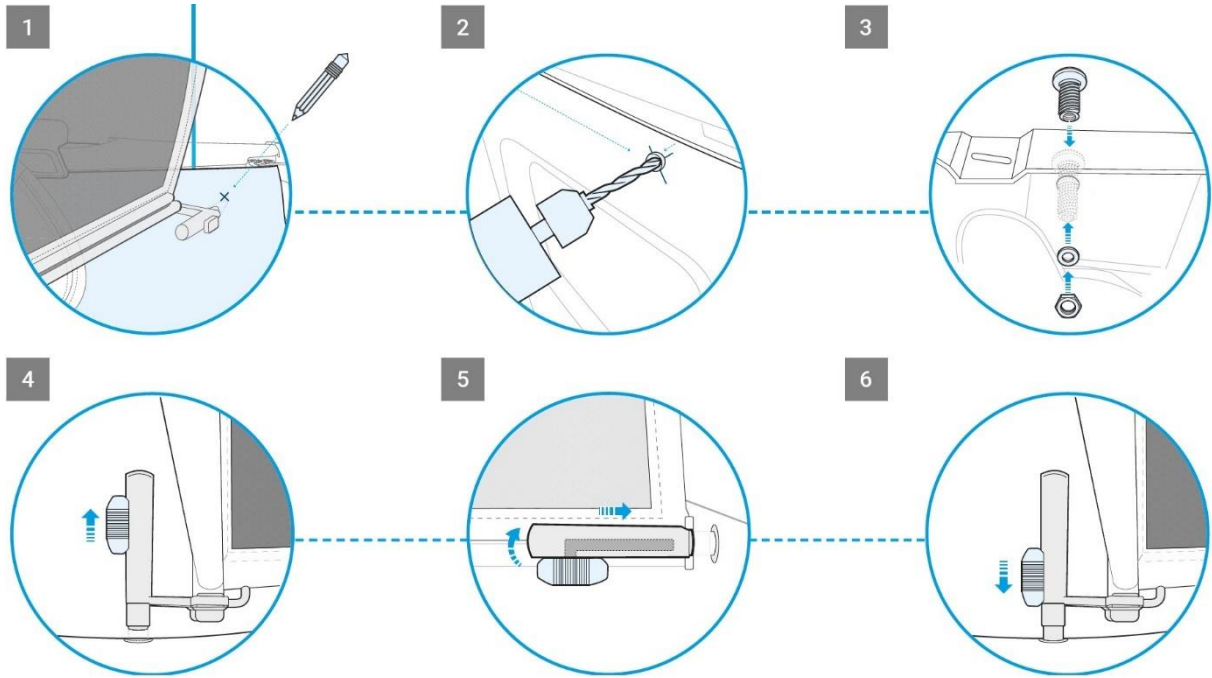
PREMIUM AFTERMARKET WIND DEFLECTORS

STEP 3

Hold the wind deflector in the car and mark the position of the side pins on your side panel. Drill a 12mm hole on the marked position. The side panels are made of plastic so there not much force needed.



PREMIUM AFTERMARKET WIND DEFLECTORS



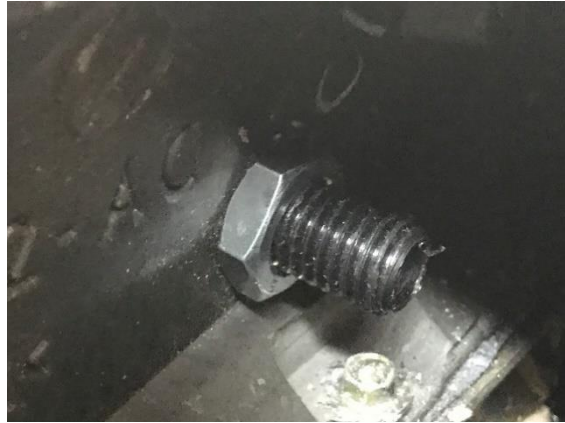
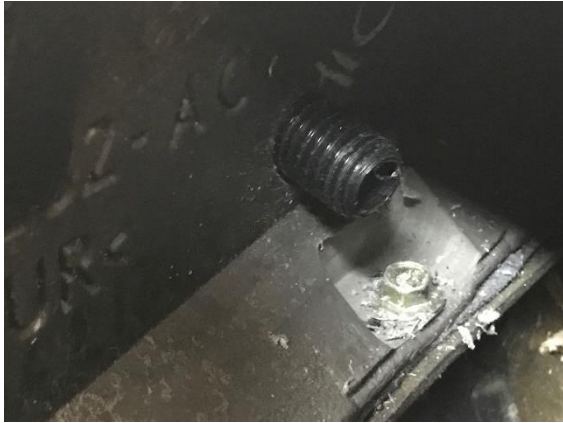
STEP 4

Push the plug through the hole and fixate the plug with the supplied nut and washer. **Don't tighten the plugs to much** since there are made of plastic they may break if you tighten them with too much force.





PREMIUM AFTERMARKET WIND DEFLECTORS



STEP 5

Reinstall the seatbelt covers and slide the wind deflector into the backseat and click the pins of the wind deflector into the installed plugs.



STEP 6

Go out for a test drive and enjoy you APERTA wind deflector!

